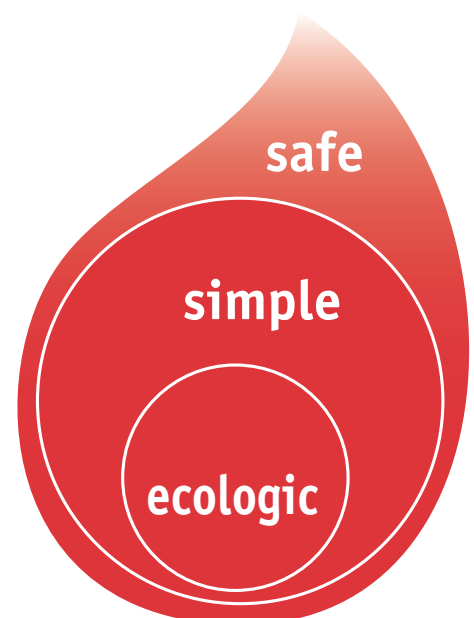




Coatings systems

Brochure for coatings consultants





Introducing RDInducoat

Simple.

Thank you for your interest in the RD Coatings systems. Solving problems with our waterborne coatings is in our DNA. Every day, often under the most challenging of circumstances, our systems deliver. In particular, the simplicity of these waterborne coating systems contribute to an effective and guaranteed end result. Our easy-to-apply coatings minimize downtime and costs while extending the life of your building and/or equipment.

Safe.

The aim of this brochure is not only to introduce a selection of our systems, but also to introduce our company. RD Coatings was founded in 2000 as part of the Groupe Dothée (established in 1948) by Dr Philippe Rondou. The outdoors performance of RD was brought indoors via RDInducoat (since 2007), with a strong focus on hygiene, in all cases delivering trusted ISO 9001 certified coatings to distributors in more than 20 countries.

Ecologic.

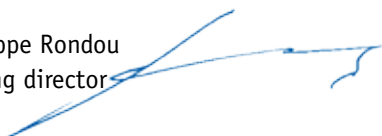
RD Coatings not only provides assurance, but our coatings are also ecologically best-in-class. The waterborne coatings contain no harmful VOC emissions – respecting the applicator and the environment. This is why leading specifiers around the globe prefer RD Coatings for their high-profile projects. Ecological with a strong, long-term, reference base.

Our know-how, your competitive advantage. Our coating consultants are at your service.

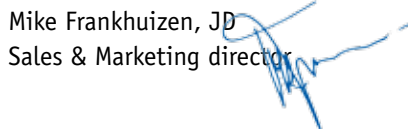
Safe, simple and ecological.

Welcome to RD Coatings.

Dr Philippe Rondou
Managing director



Mike Frankhuizen, JD
Sales & Marketing director



Headquarters Belgium

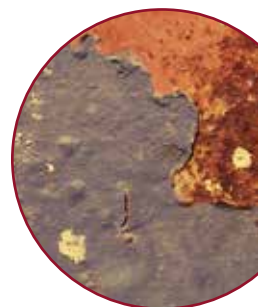
Rue Ernest Matagne 19
B - 5330 Assesse – Belgium



Sales Office The Netherlands

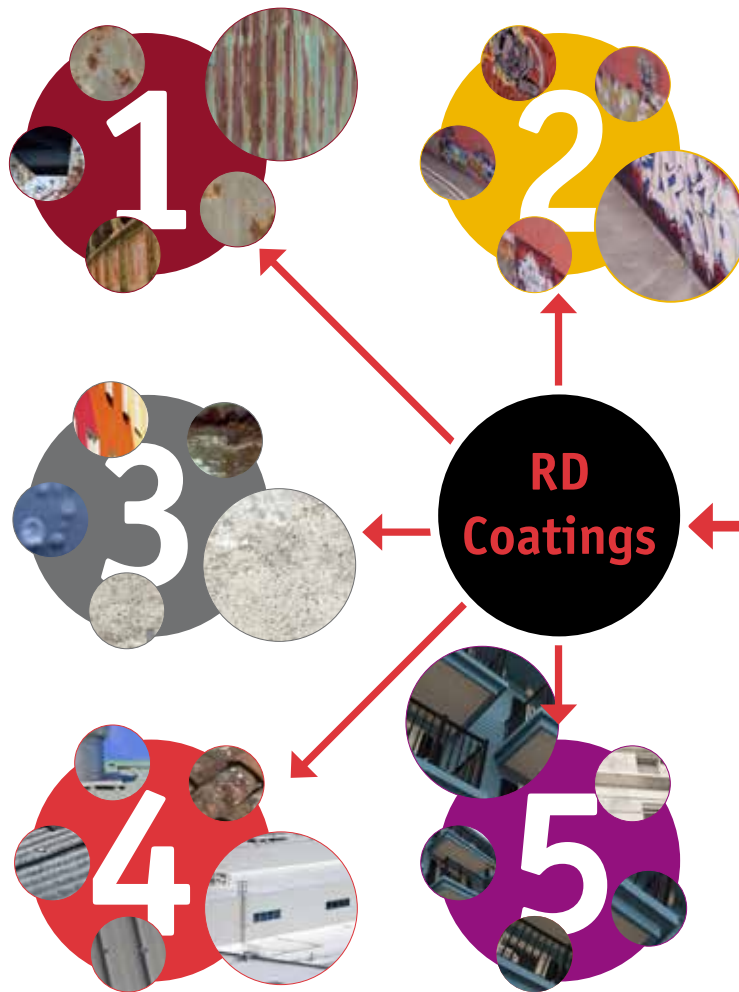
Kosmonaut 21A
3824MK Amersfoort – The Netherlands

RDINDUCOAT®
safe, simple & ecological



Do the RD Challenge!

RD Coatings prides itself on providing customized solutions to problems. Contact us and we will have a representative conduct an on-site inspection and propose a solution. Most important: give us your most challenging problem, and we will carry out a small-scale mock-up. The mock-up ensures that the fit, form and finish of the system will show the performance. These often exceed the expectations. We are ready to take on your challenge.



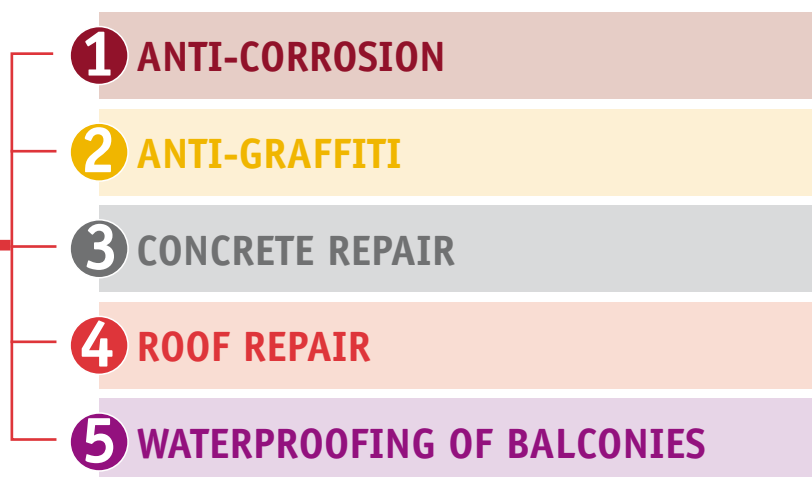
If you think of standardization as the best that you know today, but which is to be improved tomorrow; you get somewhere. *Henry Ford*

About RD Coatings

RD Coatings is located in Assesse, Belgium and we have distributors all over the globe. We manufacture premium, high-performance waterborne solutions. Our company prides itself on providing long-term, innovative solutions to specific problems. Over the past decade we have worked directly with architectural and engineering firms, property managers, and building owners to evaluate their problems and provide a long-term solution.

What are the key solution areas?

Within our broad range of solutions, certain systems stand out. For this brochure we have selected five of these systems, to give an impression of the possibilities and performance:



Each of these systems can be used in conjunction with one another to provide an integrated restoration and waterproofing system for your entire building. The systems are compatible with most existing coatings and substrates.

The added value of RD Coatings for your project:

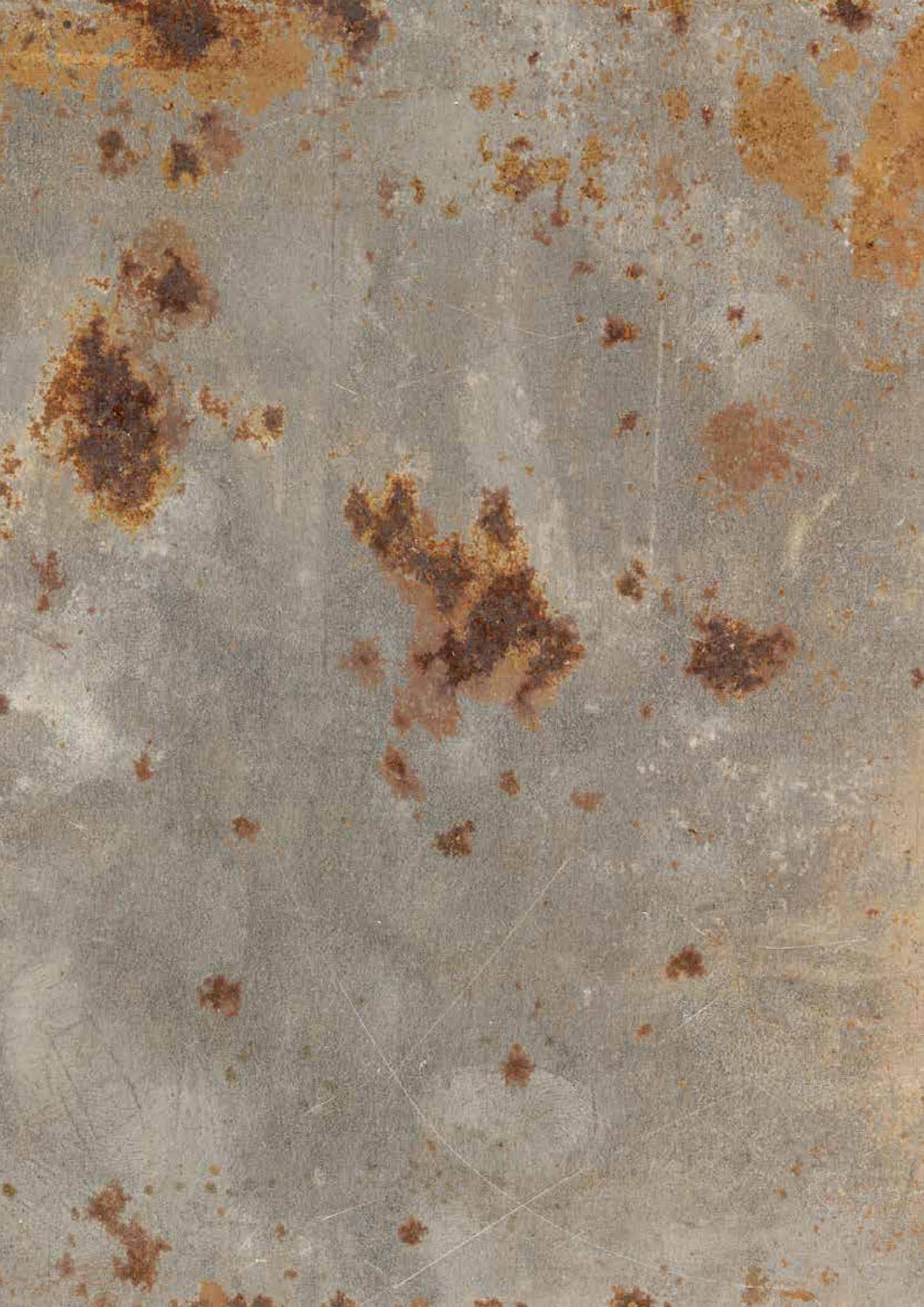
- Water-based (environmentally friendly)
- Requires inexpensive surface preparation
- Easy to apply

What is the typical price-performance?

For today: The project cost for a renovation using RD Coatings is very competitive to any traditional coatings system, because of the inexpensive surface preparation and ease of application – saving labor cost.

For tomorrow: The exploitation cost of maintenance is highly competitive because of the long-term performance of the coatings.





1

Anti-corrosive protection of metal surfaces

- Universal
- From corrosion class C1 to C5M

- Including the option to protect the dry film against algal growth
- Waterborne
- Simple

For example

- Elastometal
- Metalunicoat

Auxiliary preparation products, e.g.:

- Multiprim

- Prep1
- Degreaser

DESCRIPTION OF TWO OF OUR SYSTEMS

Our systems are intended to have a positive impact on the investment decision of whether or not it is viable to renovate. Even constructions which are heavily corroded will get a new lease of life when renovated with RD Coatings.

WE OFFER TWO SYSTEMS:

SYSTEM A. CORROSION LEVEL C1-3 / LIMITED CORROSION

SYSTEM B. CORROSION LEVEL C4-5 / HEAVY CORROSION

For both systems, the following technical characteristics apply:

- Single Package
- Waterborne
- Surface preparation limited to **ST2/SA2: Direct to rust**

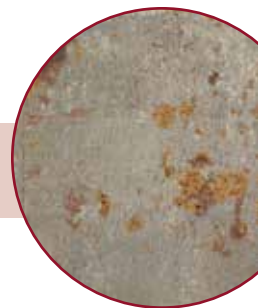
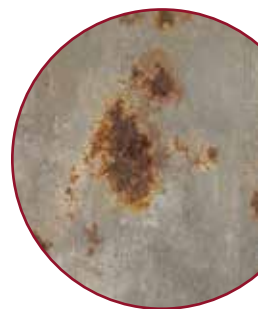
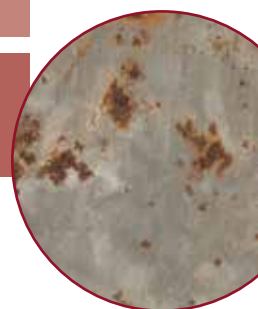
The easy preparation in particular can make all the difference - often water-pressure cleaning is enough.

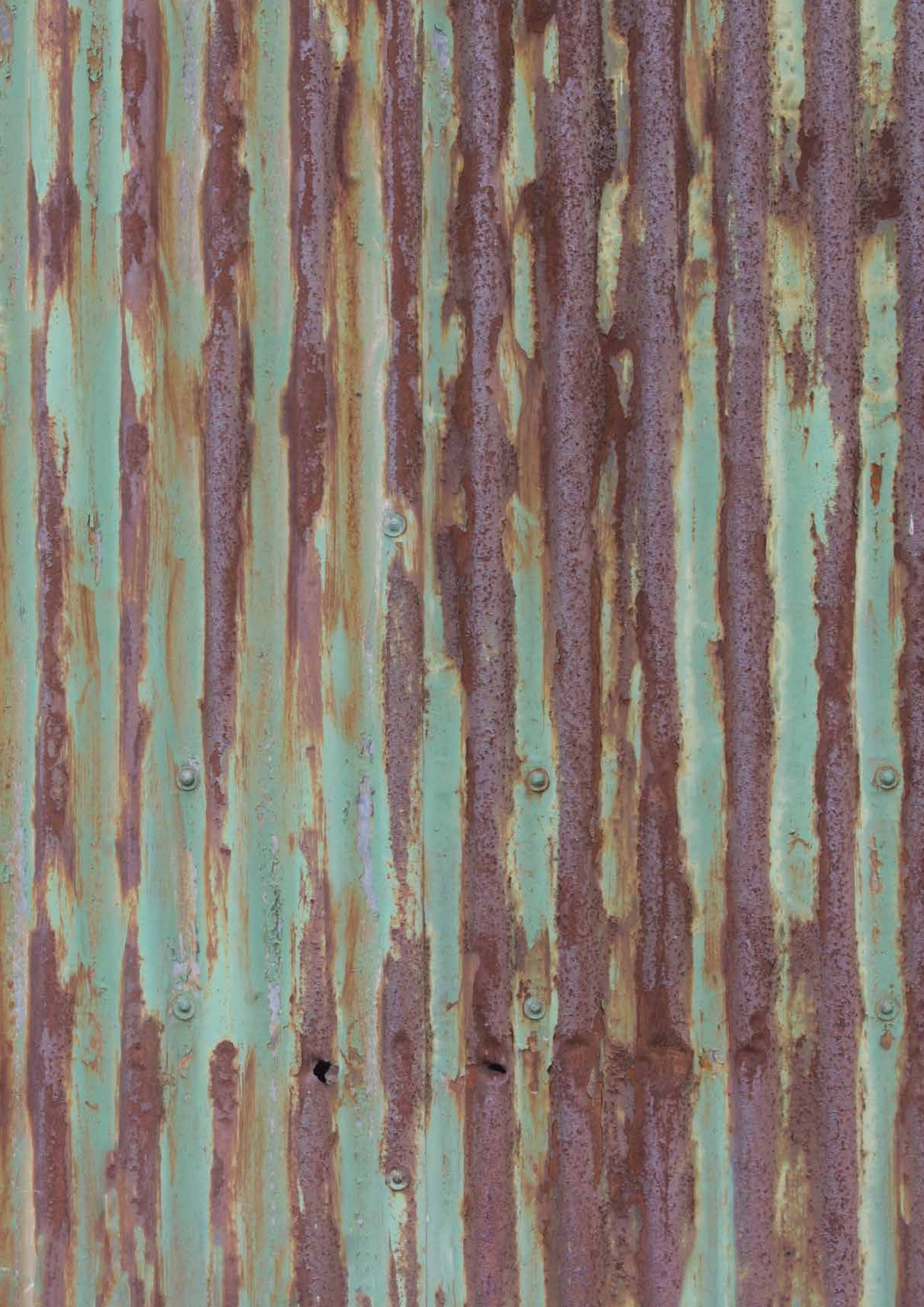
"Anti-corrosion is the core strength of RD Coatings"

safe

simple

ecologic





1

System A.

Corrosion level C1-3 / Limited corrosion protection

- Universal
- From corrosion class C1 to C3

- Including the option to protect the dry film against algal growth
- Waterborne
- Simple – single pack

- Metalunicoat

Auxiliary preparation products, e.g.:

- Multiprim

- Prep1
- Degreaser
- Hydrograff HP

SYSTEM A. LIGHT TO MEDIUM CORROSION PROTECTION

Steel sheet, silos, storage tanks – objects which are not exposed to heavy corrosion but need anti-corrosive protection. For these kinds of projects, Metalunicoat is perfect. The ease of application makes it economically viable to choose Metalunicoat for renovation. Even jaded steel sheet buildings protected by plastisol can regain their stature and image when freshly coated with an anti-corrosive coating, all for a limited investment. This single pack combines primer and topcoat. In most cases, the surface preparation is limited to high-pressure water cleaning (ST2/SA2). Airless spray delivers a great result.

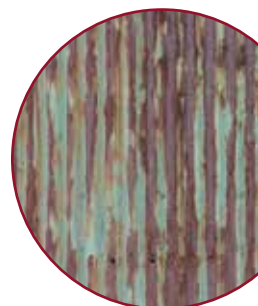
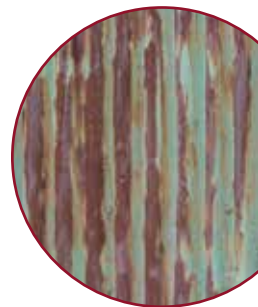
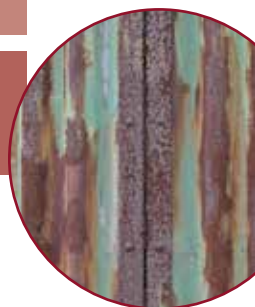
And, for the areas on the North site of the building, the dry film can be protected against the growth of green algae – using the Metalunicoat GREEN.

We can offer long-term guarantees.

safe

simple

ecologic





1

System B.

Corrosion level C4-5 / Heavy corrosion protection

- Universal
- From corrosion Level C4 to C5M

- Waterborne
- Simple – single pack
- 200% Elongation
- Salt-resistant

- Elastometal

Auxiliary preparation products, e.g.:

- Multiprim

- Prep1
- Degreaser
- Hydrograff HP

SYSTEM B. HEAVY CORROSION PROTECTION

The most challenging environments for metal objects, such as bridges, seaside buildings, industrial constructions, require the highest possible protection – up to C5M (ISO 12 944). Both the cost of the application, but certainly also the long-term cost of ownership, necessitate a system which assures performance under these circumstances.

The actual anti-corrosive properties have been proven to be best-in-class. This is why the Danish government, for example, has specified our technology. Elastometal is formulated to resist the thermal cycle via elongation. Elastometal retains flexibility for decades, while at the same time providing a membrane capable of spanning new cracks that develop.

Elastometal is a single-pack coating. The dry film thickness is such that the membranes of the coating can protect against water, salt spray and other aggressive environments. The preparation is limited to ST2/SA2 – high-pressure water cleaning suffices in most cases.

In some cases it can be useful to coat the fairly soft film of Elastometal with a harder finish, for example with Metalunicoat.

In the case of algal growth, the Metalunicoat GREEN will not only give a harder finish, it will also protect the dry film against the growth of green algae.

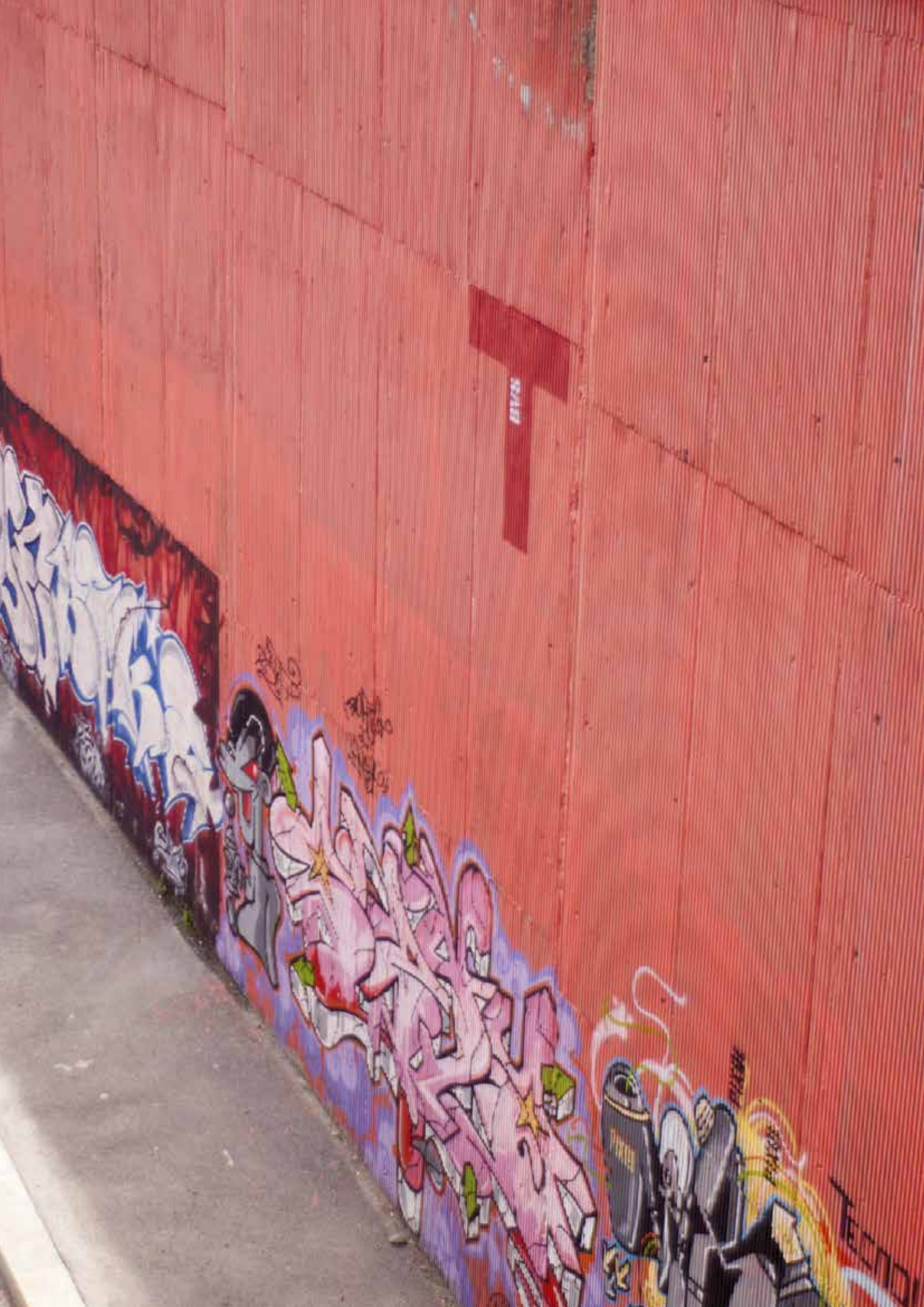
We can offer long-term guarantees.

safe

simple

ecologic





Anti-Graffiti

- Anti-graffiti

- Waterborne
- Easy

- Monograff
- Hydrograft HP

Auxiliary preparation products, e.g.:

- Degreaser

VANDALISM

Our definition of graffiti is the writing or drawing scribbled or sprayed illicitly on a wall or other surface in a public place, defacing the building'. If the surface is not treated beforehand with an anti-graffiti coating, removal is costly and time-consuming. This is why owners choose to apply transparent polyurethane coatings to protect their properties. Not only does this make the removal of graffiti much easier, it also provides more durable protection (for example, UV, dirt).

RD Coatings offers two coatings, both of which are waterborne and easy to apply.

Monograff – a one component polyurethane coating

Suitable for surfaces which benefit from protection against incidental graffiti

Hydrograft HP – a two-pack polyurethane coating

Suitable for surfaces which benefit from protection against frequent graffiti

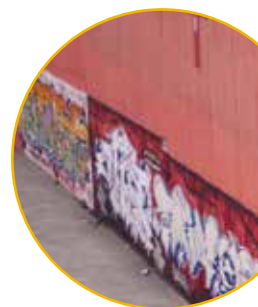
The advantages of these systems are:

- **Graffiti has very limited adherence;**
- **Low odor (Waterborne);**
- **Non-yellowing (UV resistant);**
- **Durable.**

safe

simple

ecologic





Concrete renovation

- Waterproofing
- Concrete repair
- Hydrofobic

- Including the option to protect the dry film against algal growth
- Waterborne
- Simple

- Muracryl
- Elastoflex
- Monograff
- Hydrograff HP
- Hydrowax

Auxiliary preparation products, e.g.:

- Prep1

- Cement Filler
- Quartz
- Mur Fleece

DESCRIPTION OF THREE OF OUR SYSTEMS

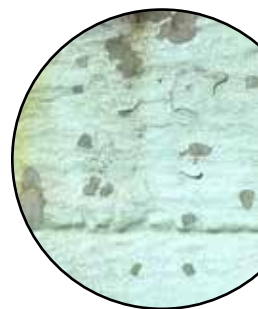
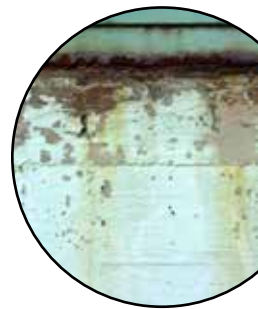
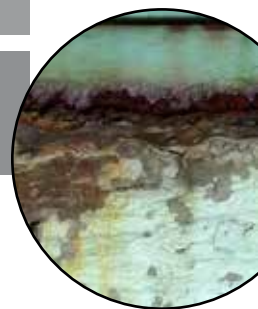
Our systems aim to have a positive impact on the decision whether or not it is viable to renovate. Even constructions which have deteriorated significantly in quality will get a new lease of life when renovated with RD Coatings. These systems include surface cleaning, concrete/masonry patching, crack and joint repair and several waterproof or hydrofobic coatings for exterior surfaces like concrete facades, masonry and balconies, all within budget.

The RD Coating Systems utilize waterborne technology to offer a set of products that enable the application of a liquid-applied waterproof membrane to virtually any clean surface. These products meet or exceed ASTM and ISO performance standards for elastomeric coatings.

To give an impression of the solution areas, this brochure presents three systems which have long-term references:

System A.
System B.
System C.

Waterproofing of facades
Waterproofing of reinforced concrete
Hydrofobic for mineral substrates



safe

simple

ecologic



Waterproofing of facades

- Waterproofing

- Including the option to protect the dry film against algal growth
- Waterborne
- Simple

- Muracryl
- Elastoflex

Auxiliary preparation products, e.g.:

- Prep1

- Cement Filler
- Quartz
- Mur Fleece

SYSTEM A. WATERPROOFING OF FACADES

RD Elastoflex gives owners the opportunity to rejuvenate a building easily, safely and ecologically. This system is elastomeric, durable, in a single package. Because of the ease of installation, the overall cost-performance is convincing. Guaranteed.

Painters especially value the ease of the application. While the wet coat is relatively thick, the actual application is like a regular emulsion. The film thickness ensures a solid end result. It is a safe choice. Also, where there are expansion joints, we offer a system using RD Elastoflex – in those cases in conjunction with RD Mur Fleece.

On top of the RD Elastoflex there are several options to apply RD topcoats with a specific added value – from coatings which can resist graffiti to coatings that protect the dry film against the growth of green algae.

The advantages of RD Elastoflex are:

- Waterborne;
- Waterproof;
- Vapor Permeable;
- No dirt pick-up;
- UV-Resistant;
- Resistant to CO² Diffusion;
- Can bridge minor cracks at low temperatures;
- Can bridge large active cracks with; addition of RD-Reinforcing Fleece;
- High Solids Content.

safe

simple

ecologic





Waterproofing reinforced concrete

- Waterproofing

- Waterborne
- Simple

- Elastoflex
- Elastometal
- Cement filler

Auxiliary preparation products, e.g.:

- Quartz
- Mur Fleece MS

SYSTEM B. WATERPROOFING REINFORCED CONCRETE

Reinforced concrete is a mixture of Portland cement and sand applied over layers of woven or expanded steel mesh and closely spaced small-diameter steel rod. It has a wide range of other uses, including sculpture and prefabricated building components. Unfortunately, the quality of the concrete or the thickness of the concrete layer is not always of the appropriate standard. Over the years, this is manifested via corrosion, cracks and damaged concrete. This is unsafe and has a very unattractive appearance. Still, it's a situation which can be easily corrected by our RD coatings systems. This is a realistic investment to extend the lease of life of a building for a considerable period.

Typically our RD approach is to first remove all loose pieces of concrete. The corroded pieces of steel rod are cleaned using the ST2 standard for surface preparation. After the preparation RD Elastometal can be applied. After drying, RD Cementfiller can be applied.

After these basic repairs, the object is ready to be freshly freshly coated, with RD Elastoflex for example. The building will look as good as new. Safe, simple and ecological.



safe

simple

ecologic



Hydrophobation of mineral substrates

- Waterproofing

- Including the protection of the dry film against algal growth
- Always waterborne
- Always simple

- Hydrowax Green

Auxiliary preparation products, e.g.:

- Prep1

SYSTEM C. HYDROPHOBATION OF MINERAL SUBSTRATES

Terraces, facades, monuments, roofs. Many mineral non-painted substrates are vulnerable to humidity. Often, this moisture encourages the growth of algae and moss. RD Hydrowax Green combines the advantages of waterborne polymere with a wax. The result is a transparent impregnating coating which offers a highly effective hydrophobation.

Furthermore, the transparent dry film protects against contamination by green algae and moss. The ingress of moisture is prevented, while the surface is still vapor-permeable. The coating is clear – the aesthetics of the object are not affected. On the contrary: the neat appearance is assured.

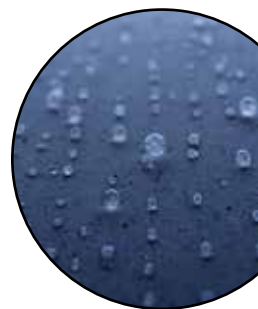
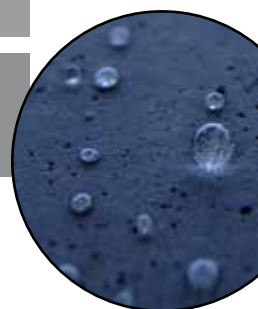
Hydrowax Green is easy to apply using a low-pressure spray.

Safe, simple and ecological. Several international references are available.

safe

simple

ecologic





Liquid waterproofing of roofs

- Tiled roofs
- Cement board roofing sheets
- Metal roofs
- Flat roofs (bituminous)

- Including the option to protect the dry film against algal growth
- Waterborne
- Simple

- Roofacryl
- Elastometal
- E-Deck*/ Elastodeck
- Roofwhite

Auxiliary preparation products, e.g.:

- Prep1

- Roof Fleece

**product name might differ per country for this product line*

DESCRIPTION OF THREE OF OUR SYSTEMS

A roof can be a very expensive headache for owners. Fortunately enough, the coatings systems of today offer a cost-effective, durable, solution. These coatings are formulated to perform under the harshest of conditions: heat, rain, snow, UV-light, pollution, algal growth. From New York to Moscow, from extreme cold to heat, RD Coatings are specified on roofing projects. Their performance is without any doubt and within budget. *Safe, simple and ecological.*

To give an impression of the solution areas, this brochure presents three systems which have long-term references:

- A. Metal roofs**
- B. Cement board roofing sheets**
- C. Flat roofs (bituminous)**

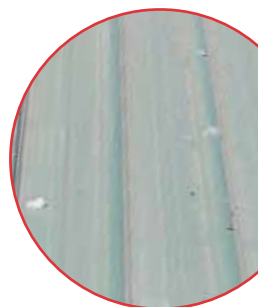
Characteristic of all our RD Roofing systems:

- **Highly resistant to weathering and environmental influences**
- **High elasticity, even at low temperatures**
- **Due to the thixotropic consistency, a thick layer per coat is achieved**

safe

simple

ecologic





Corroded metal roofs

- Metal roofs

- Including the option to protect the dry film against algal growth
- Waterborne
- Simple

- Elastometal
- Metalunicoat GREEN

Auxiliary preparation products, e.g.:

- Roof Fleece

- Prep1

SYSTEM A. CORRODED METAL ROOFS

Anti-corrosion is the core strength of RD Coatings. Corroded metal roofs in particular benefit from our coatings systems. They are effective against galvanic, crevice and filiform corrosion. The choice for the appropriate RD Coatings system is based on the assessment of the severity of corrosion, which in turn depends on the type and amount of moisture.

Crevice or crack corrosion is where a small volume of stagnant moisture is held against a surface long enough for the moisture to penetrate the protective coating. The crack has to be large enough for the moisture to enter, but small enough to create a stagnant zone where it just sits. This type of corrosion usually forms in tiny cracks – only a few thousandths of an inch wide. Typically, these small cracks are in places where the metal has been dented, bent or folded. Cracks beneath the heads also create dents that hold water. This is why our elastomeric thick layer anti-corrosion Elastometal is so effective.

The liquid-applied waterproof membrane achieves a high layer thickness per coat. Due to its elastomeric capability, the dry film retains its flexibility for decades while at the same time, the membrane is capable of spanning new cracks that develop, making it an effective solution against galvanic and crevice corrosion.

Last, but not least, filiform corrosion. This is a cosmetic issue. This corrosion appears as a thin filament, usually beneath the paint. Rusting takes place only at the head of the filament, so corrosion doesn't spread out uniformly. Corrosion begins at panel edges and usually proceeds in a straight line. For these types of projects, Metalunicoat is the best solution.

This is a waterborne anti-corrosive topcoat. Metalunicoat has the GREEN option, which is typically specified for the north side of the building – as the dry-film is protected against the growth of algae.

safe

simple

ecologic





Cement board roofing sheets

• Cement board roofing sheets

• Including the option to protect the dry film against algal growth
• Waterborne
• Simple

• Roofacryl
• Elastodeck*/E-Deck

Auxiliary preparation products, e.g.:

• Roofwhite

• Roof Fleece
• Prep1

**product name might differ per country for this product line*

SYSTEM B. CEMENT BOARD ROOFING SHEETS

For many industrial buildings, fibre cement sheets are still the favourite roofing option. Fibre cement roofing provides good resistance to aggressive atmospheric conditions. After many years the appearance of the building can deteriorate. Algal growth can make a building look unattractive. That is the time to clean and coat. Easy, safe and simple.

Building owners cannot tolerate a leaky roof, especially when the building is exposed to humid environments and contains expensive equipment. These roofs have problems which are often attributed to the poor performance of one roofing components and/or to a poor design of the roofing system. This can be repaired using RD Coatings.

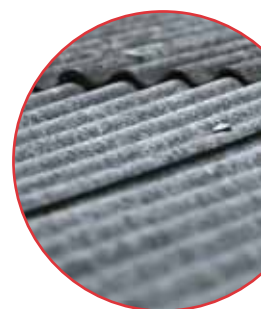
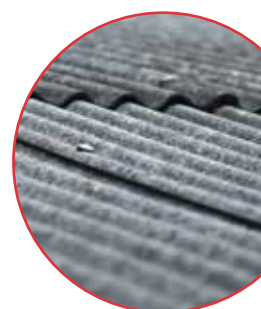
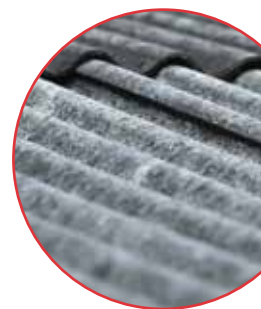
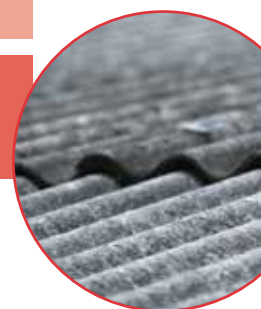
After the cleaning process, using high-water pressure and the RDInducoat Prep1, there are two basic options:

- 1 The basic option, for roofs which only need a protective new coat. In such cases two coats of RD Roof Acryl suffice.
- 2 The durable option combines protection with waterproofing. In this case, RD Elastodeck will do the job. Due to the thixotropic consistency, a high layer thickness per coat is achieved. This thick dry film is highly resistant to weathering and environmental influences. And RD Elastodeck offers high elasticity, even at low temperatures. Both systems can benefit from the GREEN Line – in which the dry film of the coating is protected against the growth of algae and moss.

safe

simple

ecologic





Flat roofs (bituminous)

- Flat roofs (bituminous)

- Including the option to protect the dry film against algal growth
- Waterborne
- Simple

- Elastodeck*/E-Deck
- Roofwhite

Auxiliary preparation products, e.g.:

- Unifix

- Roof Fleece

**product name might differ per country for this product line*

SYSTEM C. FLAT ROOFS (BITUMINOUS)

Traditional roofing systems, like bitumes, have serious disadvantages which can result in major costs. Decreasing elasticity in particular can result in cracks and delamination at the joints (roof lights, sidings). A new layer of bitumes is not optimal for applicator, environment and client: think of the solvents and the fire risk. This is why many architectural and engineering firms, property managers and building owners prefer waterborne roof coatings. Easy, safe and ecological.

The easy application of the thick coating is what makes this system so attractive. The one pack waterborne system offers excellent waterborne waterproofing. It can be applied either by brush, roller or airless spray equipment. The coating is dry fall and forms a seamless rubber and water-proof membrane. It does not break down from exposure to ultra-violet radiation. Volatile organic compounds are close to 0%. Reinforcing mesh such as RD Fleece is available if necessary.

safe

simple

ecologic





Terraces/Balconies/Walkways

- Balconies
- Walkways
- Terraces

- Problems caused by rainwater
- Waterborne
- Simple

- Elastodeck*/E-deck
- Monofloor
- Hydrograff HP
- Monograff

Auxiliary preparation products, e.g.:

- Degreaser
- Prep 1

- Roof Fleece

**product name might differ per country for this product line*

TERRACES/BALCONIES/WALKWAYS

Balconies and terraces are subject to mechanical and physical stresses. In most cases they are constructed using reinforced concrete. The rigors of snow and rain can cause serious problems. For example, if the collection points for rain water are damaged, corrosion to the reinforcing steel can develop. The RD Coatings systems provide high-performance waterproofing layers, suitable for this challenge. Not only do they guarantee waterproofing, but they also increase the durability of the structure and they are sufficiently elastic to follow the deformation.

The coatings can be applied directly on tiles, ceramics, non-porous natural stones, concrete. If needed, an anti-skid option is available.

The advantages of these systems are:

- Easy application
- Low odor
- Excellent adhesion on most substrates
- High mechanical resistance
- High abrasion resistance

safe

simple

ecologic





RD Coatings & RDInducoat

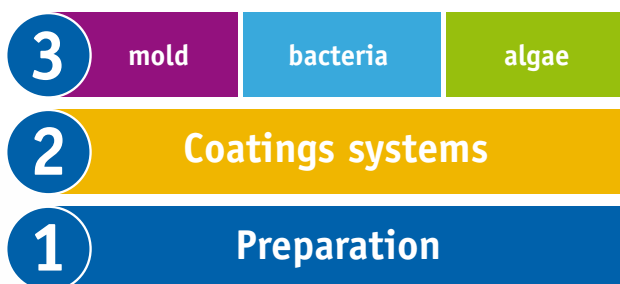
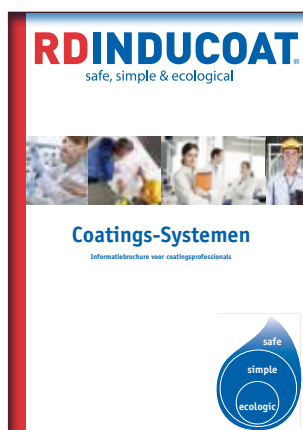
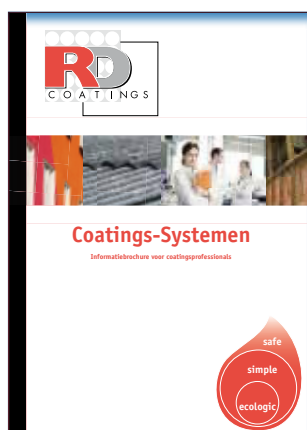
RDInducoat – the indoor part of our coatings business

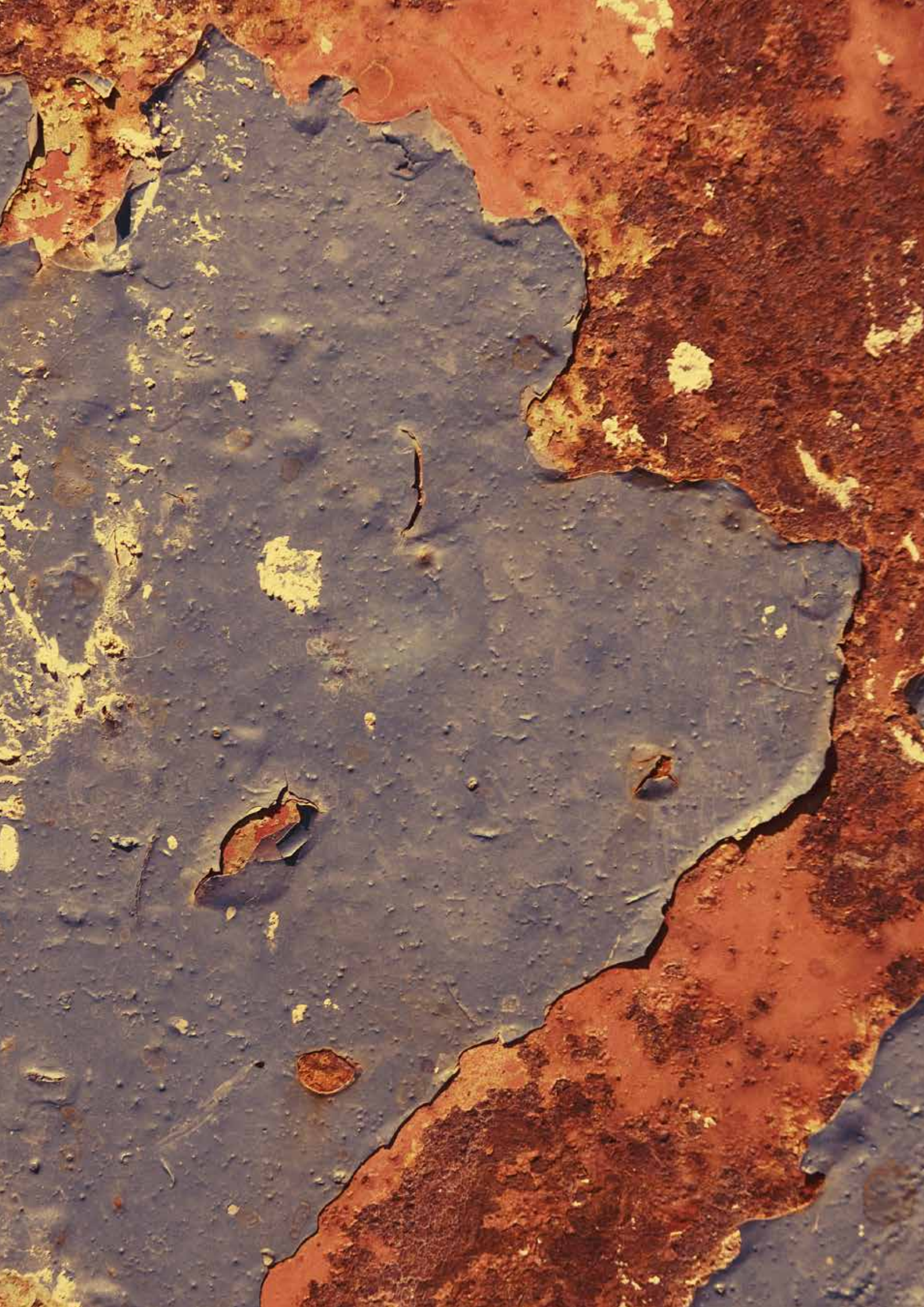
The added value of the trusted performance of RD Coatings is not limited to outdoors. Corrosion, waterproof flooring, walls – projects indoor can benefit from these systems as well. Obviously, in all cases the waterborne quality is essential for the indoors applicator. However, the requirements go often one step further: the protection of the dry-film against harmful bacteria or molds.

This has led to RDInducoat. Since 2007 this part of our business has been exclusively focused on providing indoor coatings systems to companies and institutes for whom hygiene is a top priority.

Build upon the RD Coatings experience, our formulators have developed the RDInducoat **purple line** (mold), **blue line** (bacteria) and **green line** (algae) systems.

These systems are fully comparable with the RD Coatings systems, as simple as 1-2-3. They provide added value which is recognized by a serious client base: ABBOTT Laboratories Zwolle and CARGILL Wormer – just to name two major sites which explicitly ask for RDInducoat.





Why choose RD Coatings?

Relevance

1

The investment decision to renovate benefits from benchmarking material choices. This includes coatings. Simplicity and ease of application delivers a substantial contribution to lowering project cost. In the long term, this delivers lower exploitation costs. Today, we have come to realise that waterborne systems are relevant for both applicator, end-user and the environment. This is why safe, simple and ecological is relevant for smart specifiers.

Credibility

2

The team of RD Coatings combines many years of experience. Our systems are used all over the world in major projects. Our reference list contains projects from Japan to New York, from Oresund bridge in Denmark to the Chrysler building in New York. We value the truth in engineering.

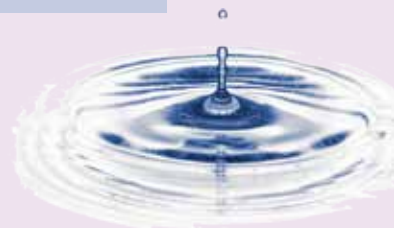
Distinctive

3

The RD Coatings customer is typically an engineer who appreciates critical analyses and benchmarking. He has an overall view that connects facts to quality management. Not limited to the cost of material, but including the full scope of a project – both in the short run as well as for the longer term. After all, quality means doing it right when no one is looking (H. Ford).



If you think of standardization as the best that you know today, but which is to be improved tomorrow; you get somewhere. Henry Ford





RDINDUCOAT®

safe, simple & ecological



Head office

Rue Ernest Matagne 19
B - 5330 Assesse – Belgium

Sales office

Kosmonaut 21A
3824MK Amersfoort – The Netherlands

For our distributor(s) in your area please contact

info@rd-inducoat.com

T +0031 (0) 33 456 23 94

F +0031 (0) 33 456 23 95

E info@rd-inducoat.com

W www.rd-inducoat.com

Legal Notice

Copyright © 2014 Inducoat B.V. and/or Dothée S.A. All rights reserved. Unless otherwise indicated, all materials on these pages are copyrighted by Inducoat B.V. and/or Dothée S.A. No part of these pages, either text or image may be used for any purpose other than personal use. Therefore, reproduction, modification, storage in a retrieval system or retransmission, in any form or by any means, electronic, mechanical or otherwise, for reasons other than personal use, is strictly prohibited without prior written permission. The identifier "RDINDUCOAT" and its product names, as well as its design refers collectively to a brand name used by INDUCOAT B.V. INDUCOAT is a registered trade mark. General inquiries should be directed to info@rd-inducoat.com.

As the information in the brochure may be incomplete, out of date or inaccurate and may contain technical inaccuracies or typographical errors, RDINDUCOAT or INDUCOAT B.V. reserve the right to update the brochure at our sole discretion. Thus, such information may be changed or updated without notice. We reserve the right to make changes to this legal notice. Terms and conditions of Inducoat B.V. and/or Dothée S.A. apply.

MS Polymer® is a registered trademark of the company Kaneka.