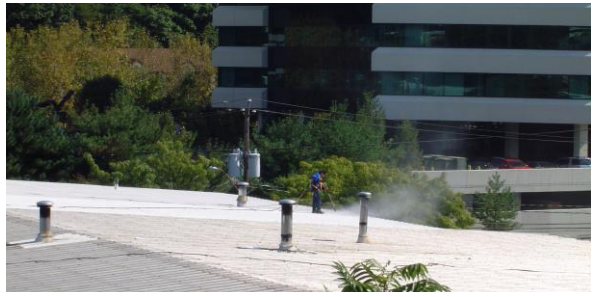


RD Coatings News

RD Coatings USA - North America Distributor of RD Coatings

Problem: Rust and Leaks

Your Solution: RD-Elastometal



This office building in Norwalk, Connecticut required restoring the functionality of the standing seam metal roof system. This area of the building is particularly vulnerable to water infiltration and since it is made of galvanized steel, it is also susceptible to rust. **RD-Elastometal**, based on water-borne acrylic technology, is a unique high-performance coating system. It is environmentally friendly and protects against rust. It can even be applied over well-adhered rust, thereby avoiding the cost and environmental challenges associated with sandblasting.

The entire surface is pressure washed at 4,000 psi with a 0° spinner tip to clean the surface and eliminate all loose debris, a very important step in ensuring proper adherence of the liquid membrane to the existing substrate. The entire surface is primed with **RD-Elastometal** or **RD-Multiprim**. (The type and condition of the metal will determine which product is used.) All screw heads are detailed with a stripe coat of **RD-Elastometal** and all seams are detailed using RD reinforcing mesh and **RD-Elastometal**, which significantly increases the performance of the liquid membrane, enabling it to bridge existing cracks as well as new ones that may form under the membrane as a result of continual expansion and contraction of the metal system. Once detail work is complete spray apply 1 or 2 coats of **RD-Elastometal**, depending on job conditions. In some cases a top coat of **RD-Mur Acryl** may be used to achieve a higher gloss finish.

The RD-Reinforcing Fleece is rolled out on the surface, held taut, and **RD-Elastometal** is rolled over and through the mesh. Here, a brush is being used to apply the material. The material can also be applied by roller or airless sprayer.



Reinforcing mesh is applied to all remaining standing seams. A second, thick coat is applied to the surface to fully embed the mesh and eliminate all pinholes. Since RD products are thixotropic, they can be applied in thick coats without slumping.



*Once all the seams and exposed screws have been detailed with **RD-Elastometal**, the body of the metal roof is ready to receive the spray application of **RD-Elastometal**.*

Finishing Touches!

An Airless Sprayer Can Improve Productivity and Make It Easy to Cover Hard to Reach Areas.

RD-Elastometal is being applied using an airless sprayer. The airless sprayer increases labor productivity and enables the applicator to easily cover screw heads and other penetrations. The major advantages of the RD system is that all products are single package, water-born, dry fall acrylics.

Typically, on a sloped roof system, the **RD** membrane thickness will be between 20 – 30 mils DFT.



This restoration project allowed the building owner to change the final appearance of the finished system. Depending on the desired finish conditions, **RD-Mur Acryl** can be used to provide a virtually unlimited choice of color in a satin finish, as well as improved wearability. Additionally, the lighter color chosen for this project enabled the owner to reduce energy costs associated with conditioning the building interior.



For More Information or to Request a Product Sample, Contact Your Local Account Representative or Contact Us at:

RD Coatings USA
167 Avon Street
Stratford, CT 06615
203-380-9477
www.rdcoatingsusa.com