



## RD-MULTIPRIM

Adhesion primer for difficult surface

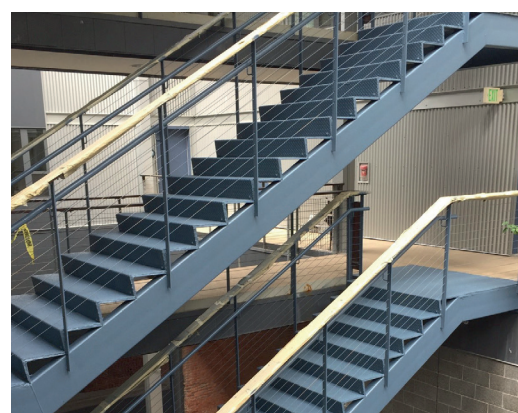
- » Excellent adhesion to non-ferrous metals – zinc, aluminium, copper, stainless steel, etc.
- » Excellent adhesion to a wide variety of plastics, glass
- » Available in thousands of colors, including RAL and NCS
- » Can be applied by brush, roller or spray
- » Fast drying



## RD-MONOGRAFF HP

High Performance polyurethane enamel

- » Good resistance to moisture, weathering and UVs
- » Good abrasion and scratch resistance
- » Fast drying and easy to apply by brush, roller or spray
- » Available in gloss, satin or matt
- » Available in thousands of colors, including RAL and NCS, and clear



## RD-HYDROGRAFF HP

High Performance polyurethane finish coat

- » High chemical resistance – suitable as anti-graffiti coating
- » Very high mechanical and abrasion resistance
- » UV resistant – finish available in gloss, satin or matt
- » Available in thousands of colors, including RAL and NCS, and clear
- » Application by brush, roller or spray



C4

C5

## RD-MONOGUARD + RD-HYDROGRAFF HP

1+1=3

Very high corrosion resistance  
Very high mechanical resistance  
Very high chemical resistance